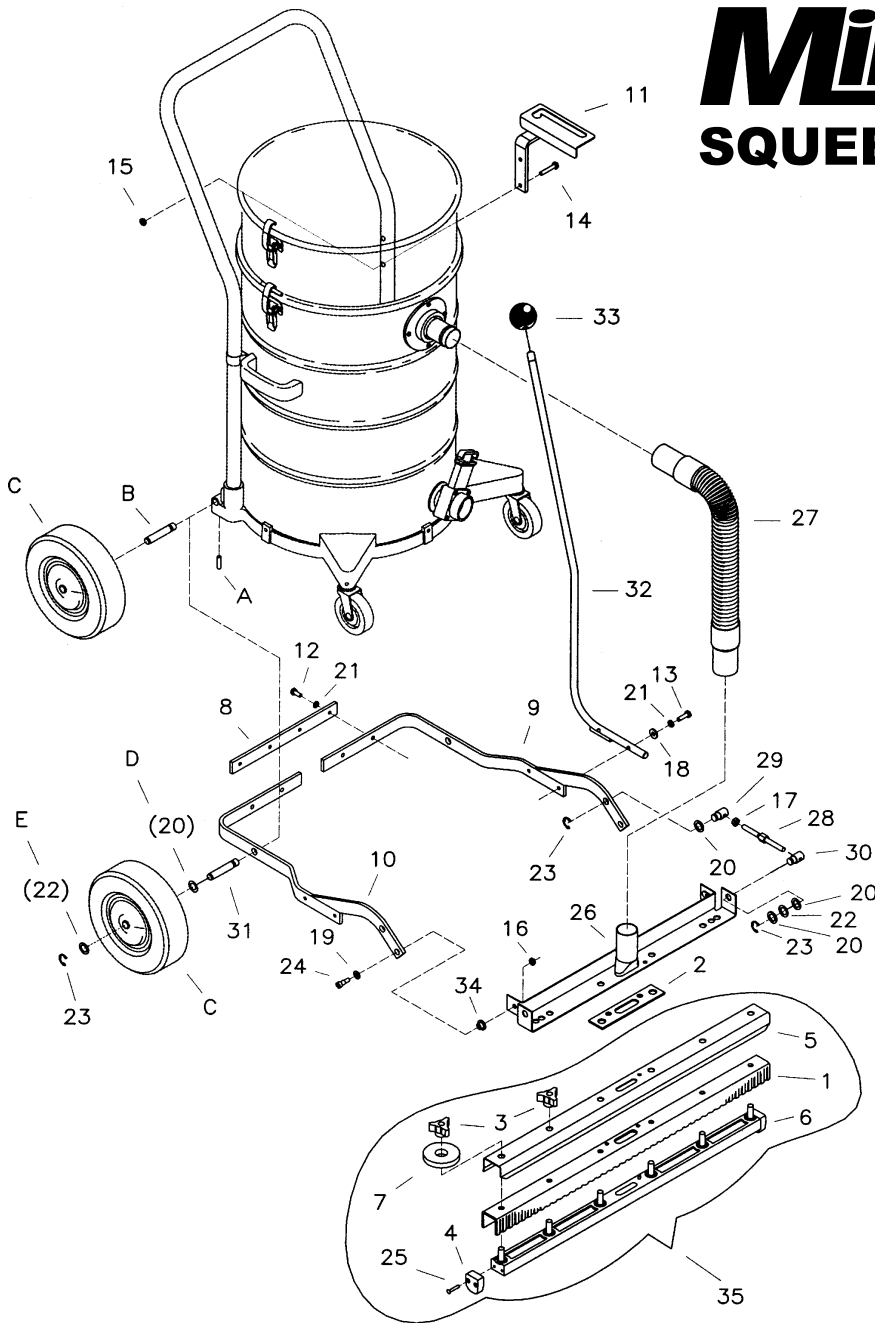


Minuteman®

SQUEEGEE ASSEMBLY

Model: 470200



PART LIST

ITEM	PART	QTY	DESCRIPTION	ITEM	PART	QTY	DESCRIPTION
1	11-145	1	Squeegee Gum Rubber	19	711506	2	WSR-Flat 5/16 (Narrow) STPL
2	430073	1	Gasket Diecut PS Back	20	711524	6	WSR-Wave .52 x .87 x .01
3	430074	6	Adjusting Nut 17B/E	21	711544	6	WSR-Helical 1/4
4	430076	2	Nylon Squeegee Insert	22	711594	4	WSR-Flat .56 x .88 x .03 Nickel
5	430078	1	U Profile	23	711713	6	Ret Ring-E Ext .50
6	430079	1	Casting Squeegee Assembly	24	712041	2	BLT-Shoulder 1/4-20 x .44 x .3
7	430085	2	Bumper Wheel	25	712517	4	SCR-MC FL HD 8/32 x 1 SS
8	470001	1	Brace Rear	26	750139	1	Squeegee Mtg. Bkt. Asy
9	470201	1	Left Side Arm Bracket	27	750140-1	1	Vac Hose Asy w/new cuff
10	470202	1	Right Side Arm Assembly	28	750689	2	Stud, Adjusting
11	470203	1	Lock Plate Asy Big Gulp	29	762256PLT	2	Nut Adj. LH Zinc PLT
12	711203	4	BLT-HH 1/4-20 x .62 STL ZINC	30	762257PLT	2	Nut Adj. RH Zinc Dicromate
13	711206	2	BLT-HH 1/4-20 x .87 STL ZINC	31	800257	2	Axle SS .50 x 3.19
14	711213	2	BLT-HH 1/4-20 x 1.62 STL ZINC	32	807384	1	Rod Handle
15	711373	2	Nut-Nyloc 1/4-20	33	807385	1	Knob Handle
16	711377	2	Nut-Lock 1/4-20	34	829052	2	Bushing-FLG .312 x .437 x .31
17	711420	2	Nut-Hex Jam 5/16-18 STPL	35	833494	1	Squeegee Asy Big Gulp
18	711505	2	WSR-Flat 1/4				

INSTALLATION INSTRUCTIONS

470200 SQUEEGEE ASSEMBLY

1. Turn existing tank upside down and remove both wheels (C) by removing set screws (A), remove wheel and axle completely.
2. Install new axle 31 as supplied and reinstall set screws (A).
3. Slide bracket 9 & 10 onto axles as shown and fasten brace 8 with washer 21 and bolt 12 (qty. 4).
4. Reinstall washers D & E from old assembly and wheels C using new E-clip supplied (23).
5. Turn tank assembly to upright position and assemble as shown at left.

ADJUSTMENTS

1. Angle of squeegee assembly can be adjusted if needed, by loosening nut 17 and turning item 28. Both sides may need adjusting so that the squeegee blade is parallel to floor in down position.
2. 15 Gallon Units only: Vac Hose Assembly, item 27, should be shortened by 4" to remove excess length.

Minuteman[®]

World Headquarters
Minuteman International, Inc.
111 South Rohlwing Road
Addison, Illinois 60101

(630) 627-6900
FAX (630) 627-1130

Minuteman Canada, Inc.
2210 Drew Road
Mississauga, Ontario
L5S 1B1

(905) 673-3222
FAX (905) 673-5161

Revised 1/04
999050
Printed in U.S.A.